

Bending Test Set Up

- Run Bluehill test method “Bending_No_Notch”. Follow on-screen prompts.
- Check upper and lower loading fixture spans.

- METALS

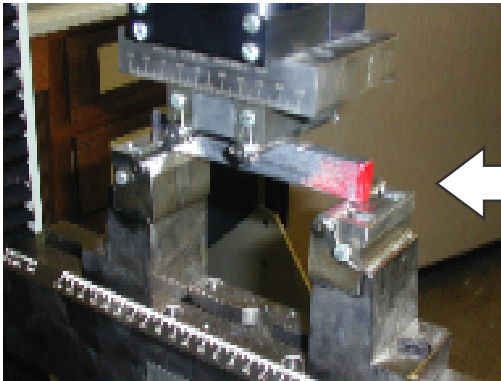
- Measure hardness near the *end* (on top).
(average 3 readings)



- PMMA

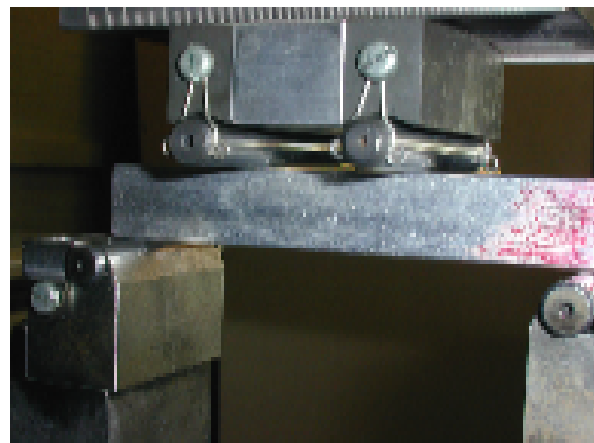
- Remove the protective paper.
- No hardness.
- Draw a line along the top with Sharpie.

- Height and width (Average 3 measurements).



Center the specimen in the fixture,
front-to-back & side-to-side.

- Carefully jog down. . . .
. . . leaving a small gap between the
rollers and the specimen.
- Check for 0.000 LOAD.
- Press G.L. RESET.
(Extension resets to 0.00 mm)



- Stop the test MANUALLY when extension (position) is (-)10 millimeters.
- Jog up to unload specimen.
- Follow on-screen prompts and enter data as appropriate.
- After unloading and removing specimen, stay clear of machine and press return.