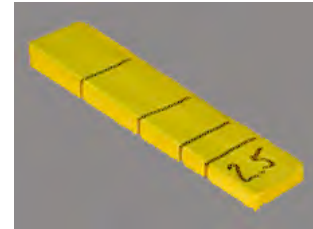


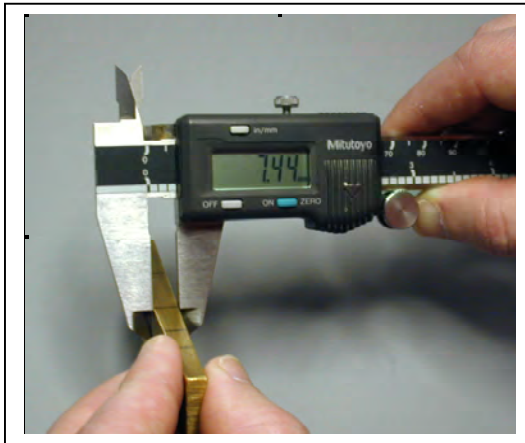
WEDGE PREPARATION

Trace the scribe marks on the edge with the Sharpie marker. Extend the lines on both sides of the wedge.

Write the target thickness (5.0 or 2.5) on the *small* end of the wedge.



Use one data sheet for each wedge.



Zero the calipers.

Measure the thickness at each scribe mark.

- Use the knife-edges of the calipers.
- Use a *minimum* amount of force to put the calipers in contact with the wedge.

Enter on the data sheet.

Take at least three (3) hardness measurements on the *edge* of the specimen.

Enter *all* measurements on the data sheet.

